

# Molteni & C

## ATALANTE by Ruckstuhl — NICOLA GALLIZIA 2018

1—  
2



### General notes

- Copyright protected
- Any irregularities should not be considered a defect but an element that emphasizes the distinctiveness of craft work
- A slight variation in colour may occur from dye lot to dye lot
- Variations of +/- 3% on measurements supplied or required are within standard.

DATASHEET

REGISTERED  
DESIGN

IX.2022

[moltenigroup.com](http://moltenigroup.com)

Dimensions in centimeters and inches. The right to discontinue and make changes is reserved. This information is based on the latest product information available at the time of printing.

**ATALANTE**  
BY RUCKSTUHL-  
NICOLA  
GALLIZIA  
2018

## TECHNICAL INFORMATION

Height fleece: cm. 1,2  
Density: 3,4 Kg/mq  
Structure: hand-tufted  
100% Hemp

### COLOURS

Desert\_ Vulcano\_ Lava

### MAINTENANCE

Vacuum cleaner, at least 2000W

### CLEANING

Recommended washing with dry cleaning products

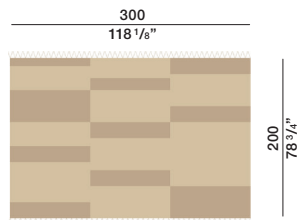
Customised carpets are available prior feasibility verification by the Molteni Sales Dept.

# Molteni & C

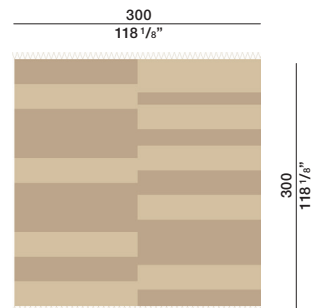
2—  
2

## DIMENSIONS

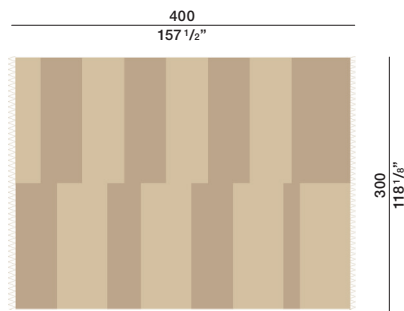
TAAT01



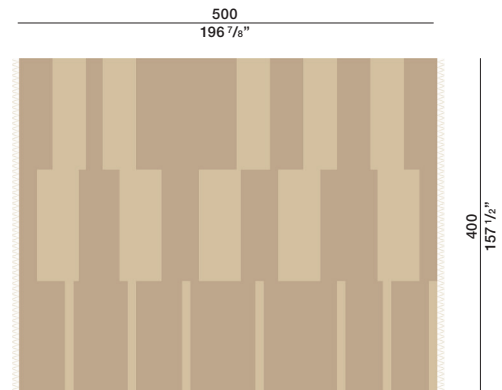
TAAT02



TAAT03



TAAT04



Desert

Vulcano

Lava



## DATASHEET

REGISTERED  
DESIGN

IX.2022