

# Molteni & C

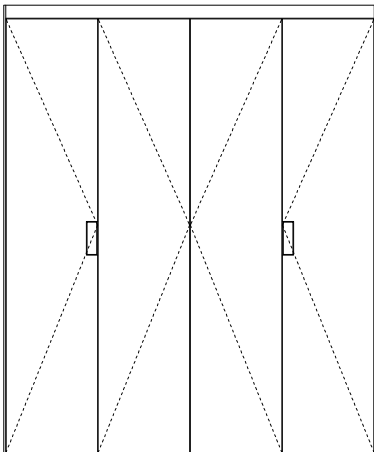
## SISTEMA 7

VINCENT VAN DUYSEN

® Molteni&C Dada Engineered patent



1-  
3



The patented Sistema 7 mechanism is also available in a version designed for full-height doors. This innovative system transforms the doors into a functional element with the option of single or double opening directions. These doors serve as authentic portals that seamlessly integrate and blend into the surrounding furnishings. They act as real design tools, capable of configuring the architectural space to create a harmonious flow between two rooms.



### FINISHES

#### Sistema 7

thermo oak 180° double opening doors,  
pewter recesses handles



### PLUSES

- Design Vincent Van Duysen
- Once doors are open, they leave a completely free passage because they simply fold up off to the side, out of the opening
- Using a special patented mechanism applied to the head jamb allows doors to open to 90° or 180° by folding back onto themselves
- The door has two dedicated handles, one inside and one outside, in pewter finish.
- Doors can be matched with finishes in the Molteni&C collection to create harmony between the rooms

# Molteni & C

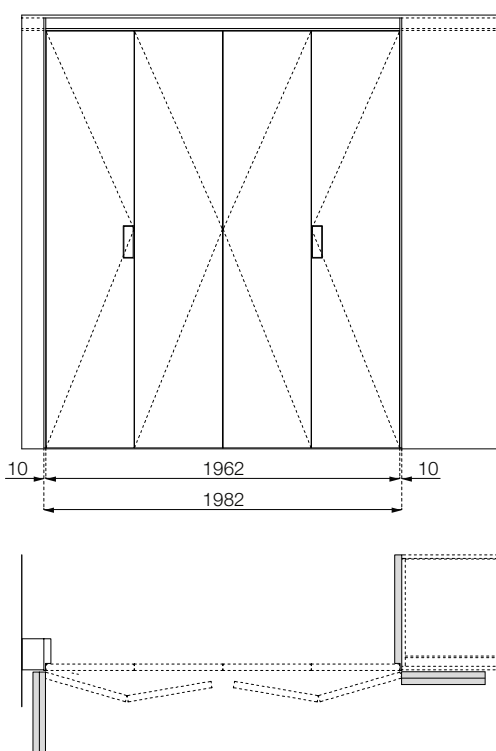
## Sistema 7 door

- The Sistema 7 portal allows you to create passages between the kitchen and the living room - or other areas of your house - by using a special patented mechanism applied to the head jamb, which allows doors to open to 90° or 180° by folding onto themselves laterally.
- This solution offers many advantages. When the doors are open, a completely free passageway is created because they simply fold up off to the side, out of the opening. Furthermore, they can be matched with finishes from the Molteni&C collection to create harmony between the rooms.
- The portal has 2 dedicated handles (one internal and one external handle) in pewter finish.

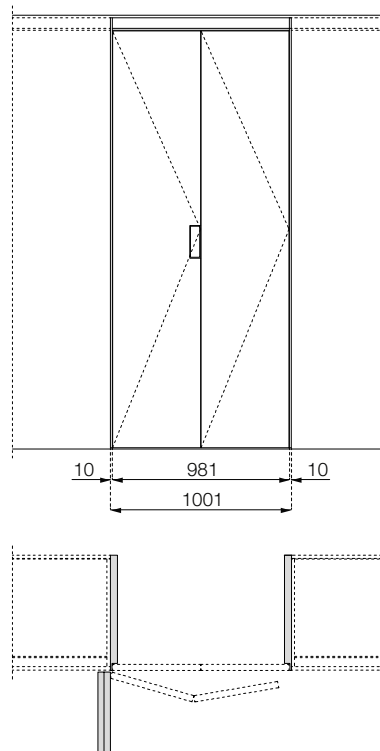


2-  
3

DOUBLE PORTAL

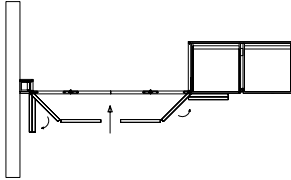


SINGLE DOOR

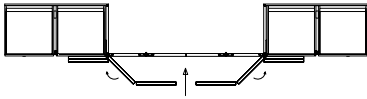


# Molteni & C

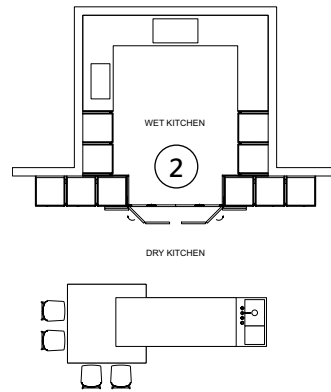
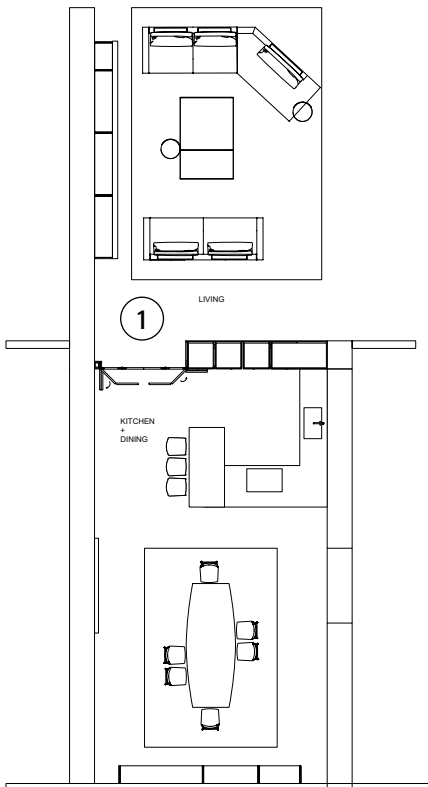
## Sistema 7 door



- ① Portal with one side opening at 90° and another at 180°, integrated between a wall and columns.



- ② Portal with 180° opening, integrated between 2 tall units.



Full height tall units composition divide the wet kitchen from the dry one, portal remain integrated into the composition.