

Molteni & C

ATALANTE by Ruckstuhl — NICOLA GALLIZIA 2018

1—
2



DATASHEET

REGISTERED
DESIGN

IX.2021

General notes

- Copyright protected
- Any irregularities should not be considered a defect but an element that emphasizes the distinctiveness of craft work
- A slight variation in colour may occur from dye lot to dye lot
- Variations of +/- 3% on measurements supplied or required are within standard.

ATALANTE
BY RUCKSTUHL-
NICOLA
GALLIZIA
2018

TECHNICAL INFORMATION

Height fleece: cm. 1,2
Density: 3,4 Kg/mq
Structure: hand-tufted
100% Hemp

COLOURS

Desert_ Vulcano_ Lava

MAINTENANCE

Vacuum cleaner, at least 2000W

CLEANING

Recommended washing with dry cleaning products

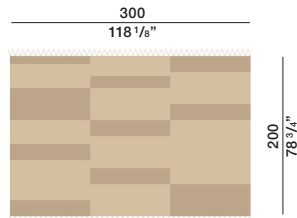
Customised carpets are available prior feasibility verification by the Molteni Sales Dept.

Molteni & C

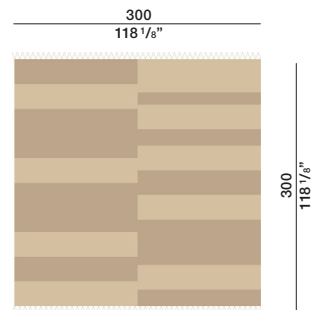
2—
2

DIMENSIONS

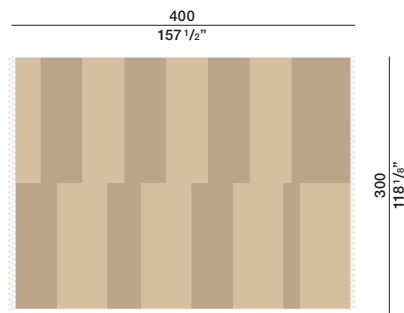
TAAT01



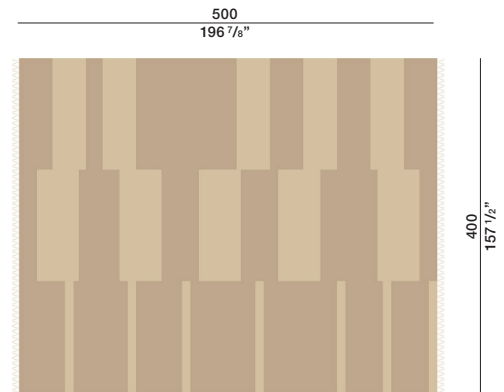
TAAT02



TAAT03



TAAT04



Desert

Vulcano

Lava



DATASHEET

REGISTERED
DESIGN

IX.2021