

HECTOR — VINCENT VAN DUYSSEN 2020

1—
6



With his Hector project, Vincent Van Duysen makes his debut in the world of upright modular bookcases, designed to achieve light and airy compositions, of any length and as tall as you like, thanks to the modular elements of which they are composed, making the most of the features of the upright fixed between the floor and the ceiling. Hector can be placed anywhere in the room, along the wall or in the centre, thereby providing a partition suitable for subdividing the living areas, set aside for relaxation, thanks also to the steerable TV stand, from dining areas dedicated to socializing, or from “smart working” spaces where laptops and tablets can be placed on the shelves or in closed storage units with hinged tops. The load-bearing element is the heart of the whole system. Made of painted or wood-panelled extruded aluminium, it can extend up to a height of 315 cm. Note the position of the uprights off-set from each other to create a surprise visual effect. Solid wooden or extruded aluminium tray-like shelves, with rounded edges on the corners, the bottoms of which can be made of glass or wood, are hooked to the uprights. The various combinations of possible finishes give rise to very different compositions in terms of their visual impact and pleasing shapes, turning Hector from a modern hi-tech bookcase, where metal and glass are the distinguishing features, into a traditional bookcase where the warmth of the wood prevails. Modular, modern and flexible.

DATASHEET

REGISTERED
DESIGN

IX.2020

FINISHES

finishes	slate/ brown	bronze/ pewter colour	black oak	extra-clear glass	smoked glass	bonded hide leather
components						
ceiling/wall mounting bracket			*			
shelves	frame		*			
	insert					
containers with flap door						
internal door insert						

* The mounting brackets and shelves with black oak finish always have slate finish hardware

Bonded hide leather

ivory
black
dark brown
natural
mud green
dove grey

Molteni & C

2—
6

TECHNICAL INFORMATION

MOUNTING BRACKET

Aluminium extrusion, painted or anodised and covered with sliced wood veneer.

SHELF FRAME

- Painted aluminium, made up of mould die cast parts and extruded parts.
- Solid wood.

SHELF INSERTS

- Extra-clear transparent or smoked tempered glass.
- Medium density fibre panel covered with sliced wood veneer.

CONTAINER WITH FLAP DOOR

Chipboard panel covered with sliced wood veneer.

The flap door interior is available with an insert in bonded hide leather.

DECODER CONTAINER UNIT

Chipboard panel covered with sliced wood veneer.

DATASHEET

REGISTERED
DESIGN

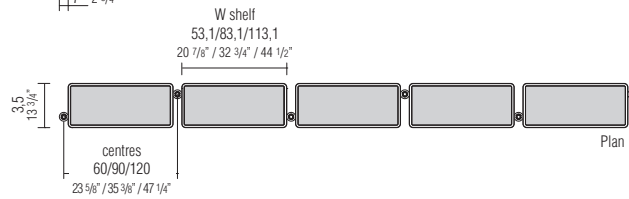
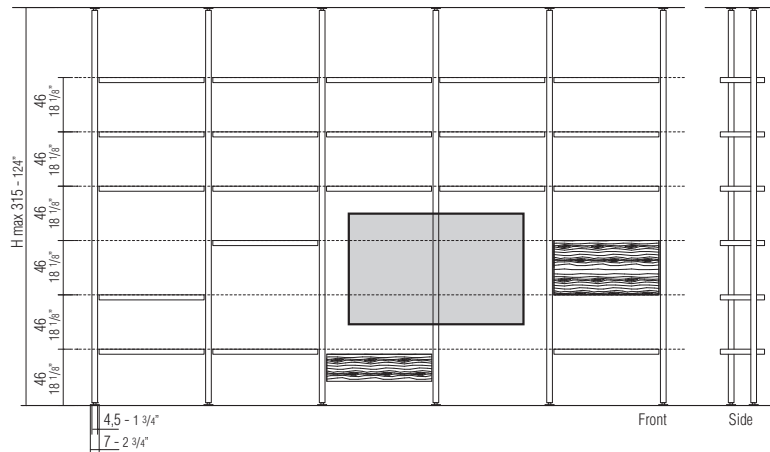
IX.2020

NOTES

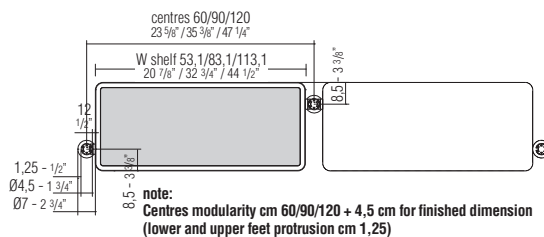
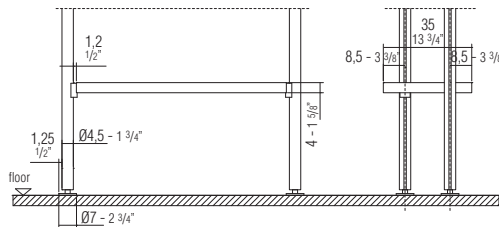
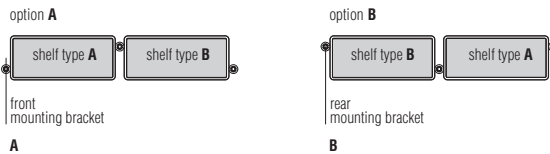
- ▶ The mounting bracket, H max 315, can be made to measure, at no extra cost.
- ▶ The depth of the bookcase cannot be reduced.
- ▶ The shelf with a solid black oak frame is not available in W 113,1 cm.
- ▶ The shelf with a solid black oak frame and container with a flap door cannot be reduced in any way.
- ▶ Shelves with frames in slate, brown, pewter colour and bronze can be reduced in width at a supplementary cost each.
Minimum reduced shelf measurement 30 cm (centre distance).

- ▶ The height at which the shelves and container are positioned is at the client's discretion.
The 46 cm step indicated on the diagram, relates to the design forms.
- ▶ The positioning of the mounting brackets cannot be changed.
- ▶ The system involves anchoring the mounting brackets at the floor and ceiling.
- ▶ The unit with flap door is made only in W cm 83,1. It is available with the door interior in bonded hide leather in Molteni range colours.
It cannot be considered as a worktop, but only as a surface to set lightweight materials.
- ▶ The decoder container unit is made only in W cm 83,1.

**Compositional
ceiling fixing diagram**

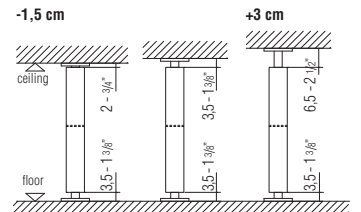


Mounting bracket positioning



note:
For making ceiling mounting brackets, communicating the height of the room is necessary and sufficient. In the case of unaligned dimensions, check the tolerances indicated below.

Ceiling fixing tolerances



Shelf capacity with aluminium frame:
W 53,1 = Kg. 15
W 83,1 = Kg. 23
W 113,1 = Kg. 27

Shelf capacity with solid wood frame:
W 53,1 = Kg. 9
W 83,1 = Kg. 15

Flap door capacity = Kg. 4
Unit interior capacity = Kg. 8
Surface capacity of flap door unit = Kg. 15

NOTES

- ▶ The mounting bracket, H max 315, can be made to measure, at no extra cost.
- ▶ The depth of the bookcase cannot be reduced.
- ▶ The shelf with a solid black oak frame is not available in W 113,1 cm.
- ▶ The shelf with a solid black oak frame and container with a flap door cannot be reduced in any way.
- ▶ Shelves with frames in slate, brown, pewter colour and bronze can be reduced in width at supplementary cost each.
Minimum reduced shelf measurement 30 cm (centre distance).

- ▶ The height at which the shelves and container are positioned is at the client's discretion. The 46 cm step indicated on the diagram, relates to the design forms.
- ▶ The positioning of the mounting brackets cannot be changed.
- ▶ The system involves anchoring the mounting brackets to the wall and at the floor.
- ▶ The unit with flap door is made only in W cm 83,1. It is available with the door interior in bonded hide leather in Molteni range colours.

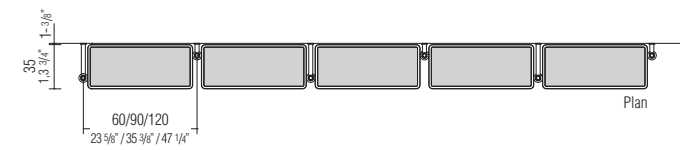
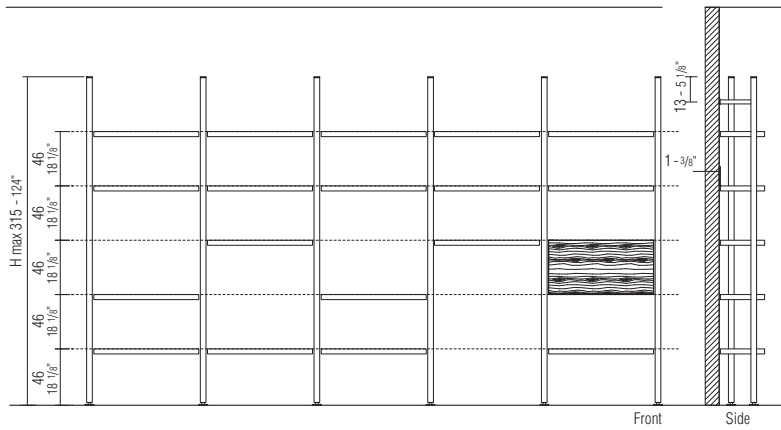
It cannot be considered as a worktop, but only as a surface to set lightweight materials.

- ▶ The decoder container unit is made only in W cm 83,1.

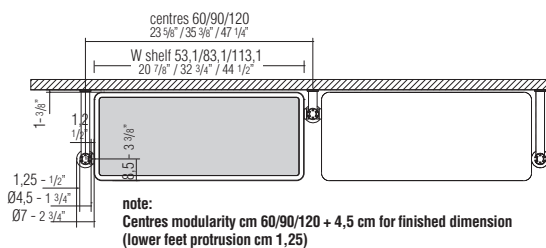
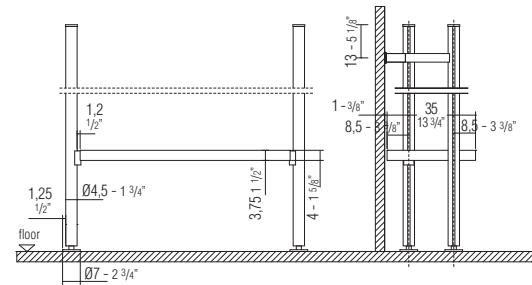
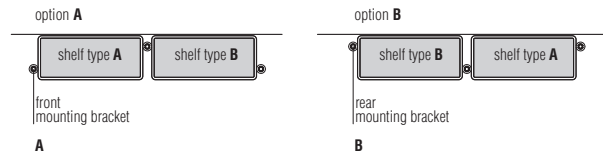
Compositional
wall fixing diagram

Molteni & C

4—
6



Mounting bracket positioning



Shelf capacity with aluminium frame:
W 53,1 = Kg. 15
W 83,1 = Kg. 23
W 113,1 = Kg. 27

Shelf capacity with solid wood frame:
W 53,1 = Kg. 9
W 83,1 = Kg. 15

Flap door capacity = Kg. 4
Unit interior capacity = Kg. 8
Surface capacity of
flap door unit = Kg. 15

DATASHEET

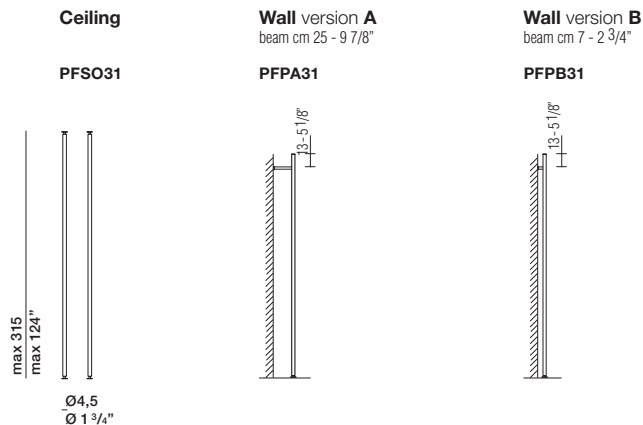
REGISTERED
DESIGN

IX.2020

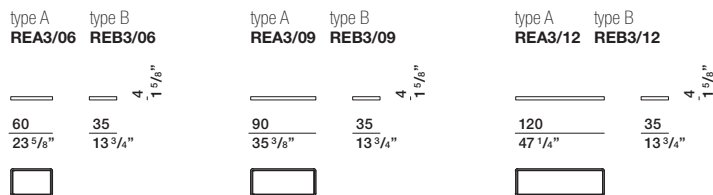
DIMENSIONS

- ▶ The mounting bracket, H max 315, can be made to measure, at no extra cost.
- ▶ Shelves with frames in slate, brown, pewter colour and bronze can be reduced in width, at an additional cost each. Minimum reduced shelf measurement 30 cm (centre distance).
- ▶ The shelf with a solid black oak frame and containers with a flap door cannot be reduced in any way.
- ▶ The mounting brackets are prepared for ceiling, floor, and wall fixing.
The dealer is tasked with choosing the most suitable and safest fixing means for each specific situation.
We recommend a scrupulous preliminary check of the structural state of the ceilings or walls before ordering and installing the Hector unit.

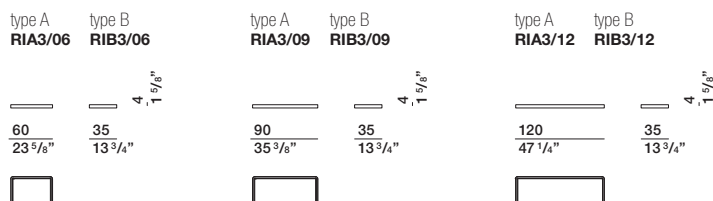
Mounting brackets



Slate/brown frame shelves



Shelves frame pewter colour/bronze



Shelves frame solid black oak



DATASHEET

REGISTERED
DESIGN

IX.2020

DIMENSIONS

► The flap door interior of the of the unit CARA03/09 - CARB03/09 is available with an insert in bonded hide leather.

Receiver system for TV signals for decoder container unit
The Ø 1,8 (3/4") sensor can be placed anywhere.

Container with flap door

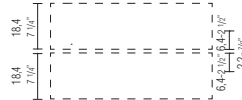
type A
CARA3/09



type B
CARB3/09



Optional internal shelf
CRI3/09



Decoder container unit with flap door

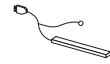
type A
CPDA3/09



type B
CPDB3/09



TV signal transmitting/receiving system with LED light for decoder container unit (transmission frequency from 30 to 38 KHz)



for 1 compartment
ETV1L

TV support

STANDARD VESA connection for TVs with screen sizes from 40" to 65". Installation on free in height mounting bracket (rear mounting bracket suggested)

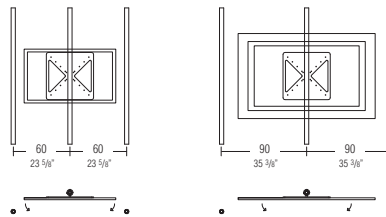
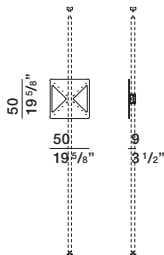
Included in the price profile 0.50 linear meter for wire passage (see detail)

Examples of use

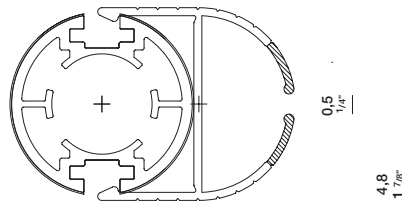
TV support
Example for 60 support
TV screen types recommended : 40"- 43"

TV support
Example for 90 support
TV screen types recommended : 49"-65"

EMPT1



Wire passage on back of mounting bracket



DATASHEET

REGISTERED DESIGN

IX.2020